

PHILIPS

Ultrasound

Lumify



Philips Lumify – ultrasound on an Android device. **Ready when you are.**



An exciting breakthrough in **point-of-care** technology.

Lumify is the app-based mobile ultrasound system that brings Philips quality imaging to compatible smart device.

**Bring the technology directly to your patients
when it's needed, for fast diagnosis and treatment.**

Our app-based ultrasound model makes it easy to get started. With three simple steps you're ready to go.

- 1**  **Download**
the Lumify app to
your smart device.*
- 2**  **Connect**
the Lumify transducer
to your compatible
smart device.
- 3**  **Scan**
with the exceptional
quality of Philips
imaging technology.

**Now with integrated tele-ultrasound.
Because the world moves in real time.**

Choose Philips Lumify integrated tele-ultrasound powered by Reacts collaborative platform to bring health professionals together with real-time two-way video and audio calls, and live ultrasound streaming with virtual guidance.

*See Lumify portal for the list of compatible smart device options: www.philips.com/lumify-compatible-devices.





Lumify combines all the advantages of Philips innovation to bring you truly mobile ultrasound capability.

Download the app, connect, scan, and share images from your compatible smart device or phone.



Lumify
C5-2
broadband
curved array
transducer



Lumify
L12-4
broadband
linear array
transducer



Lumify
S4-1
broadband
phased array
transducer

Our transducers and mobile app incorporate decades of expertise and innovation in ultrasound imaging to help you make informed decisions.

Quality imaging

Our S4-1, L12-4, and C5-2 transducers deliver exceptional image quality and reliable performance.

High-quality ultrasound imaging is now available on your compatible smart device with Lumify, the mobile app and hardware solution from Philips. Lumify's newest transducer, the S4-1, has presets for cardiac, abdominal with lung, Ob/Gyn, and FAST exams. Our L12-4 transducer supports a variety of clinical applications, including soft tissue, musculoskeletal, lung, and vascular scanning. The C5-2 offers abdominal with lung and gallbladder presets, and Ob/Gyn capabilities.

Simple connectivity

Lumify makes it easy to share information and collaborate with healthcare colleagues and specialists.

Philips Lumify mobile ultrasound gives you the power to quickly send and share images, notes, and diagnostic data via email, DICOM to PACS, a shared network, or a local directory. It's a dependable and comprehensive point-of-care solution that brings simplicity, mobility, and flexibility to ultrasound technology.

Accessible pricing

Quality imaging at a low price for increased access to ultrasound.

Put the quality, flexibility, and mobility of Philips Lumify into more hands because Lumify works on compatible Android mobile devices, relieving you of the burden of paying for a custom machine. When you purchase Lumify you'll receive:

- A Philips Lumify transducer
- Lumify ultrasound app
- Ongoing software upgrades
- Manufacturer's warranty on the hardware
- Access to Philips service and education



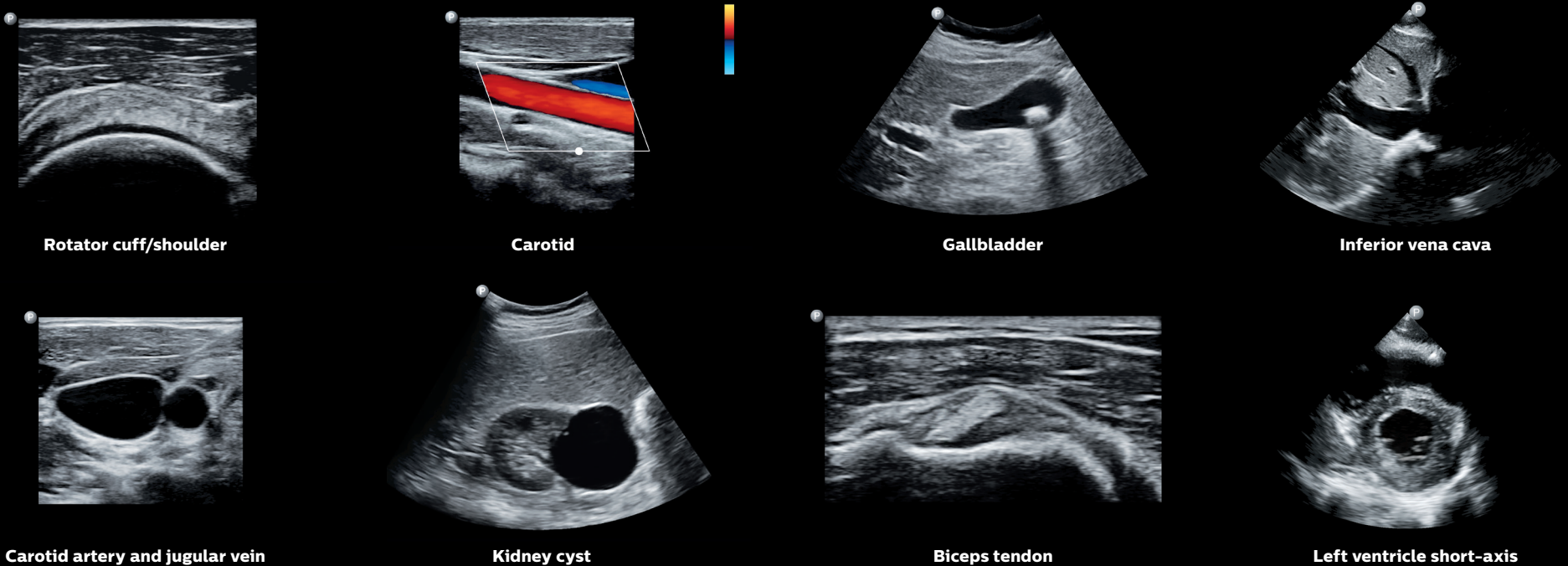
Just plug the transducer into the USB port of the compatible smart device and you're ready to begin scanning.

Lumify brings three decades of **imaging expertise** and innovation to point-of-care practitioners.

Philips Lumify offers quality imaging and flexibility with three transducers:

- C5-2 broadband curved array
- L12-4 broadband linear array
- S4-1 broadband phased array

For more information about the flexibility, simplicity, and quality of Lumify ultrasound, visit Philips.com/lumify or call **1-844-MYLUMIFY**.



©2018 Koninklijke Philips N.V. All rights are reserved. Philips reserves the right to make changes in specifications and/or to discontinue any product at any time without notice or obligation and will not be liable for any consequences resulting from the use of this publication. Trademarks are the property of Koninklijke Philips N.V. or their respective owners.



philips.com/lumify

Printed in The Netherlands.
4522 991 35331 * APR 2018